

MobileTrak[®] Systems



Go mobile.



MobileTrak3®

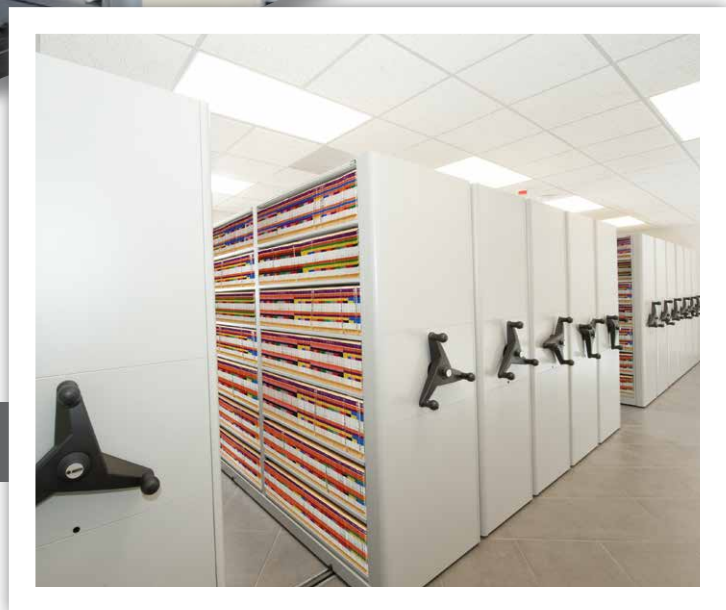
Ample storage within a low-profile system.

Do you have a small space that requires a unique storage solution? Is overhead clearance a concern? MobileTrak3® is right for you.

- Use in rooms with sprinkler systems or other height restrictions
- Enclosed drive box with external chain tensioner creates aesthetic appeal
- Carriage lengths up to 20 feet



MobileTrak3® can handle your height-restricted rooms with style.

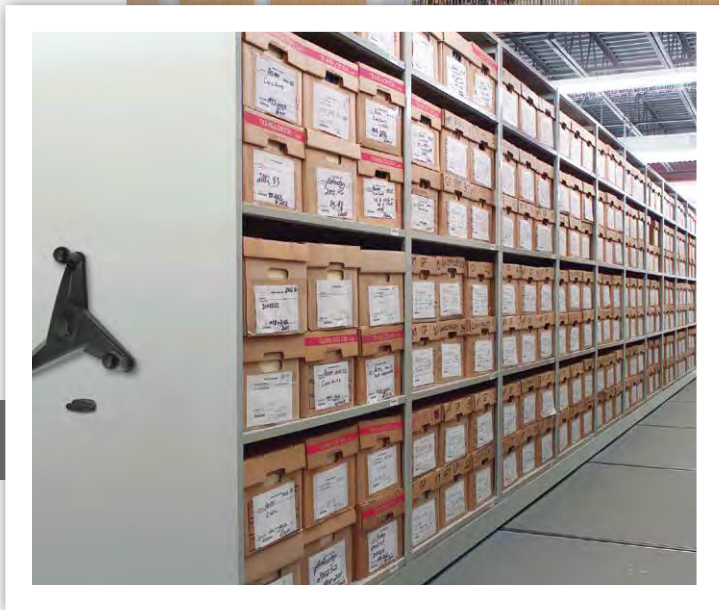


MobileTrak5®

Heavy duty and ready for any application.

Designed for large-capacity and heavy duty storage, the MobileTrak5® can handle nearly any storage challenge.

- Heavy duty carriages available in a myriad of sizes make the most of large areas
- Mechanical safety sweep options for added security
- Electrical system option available

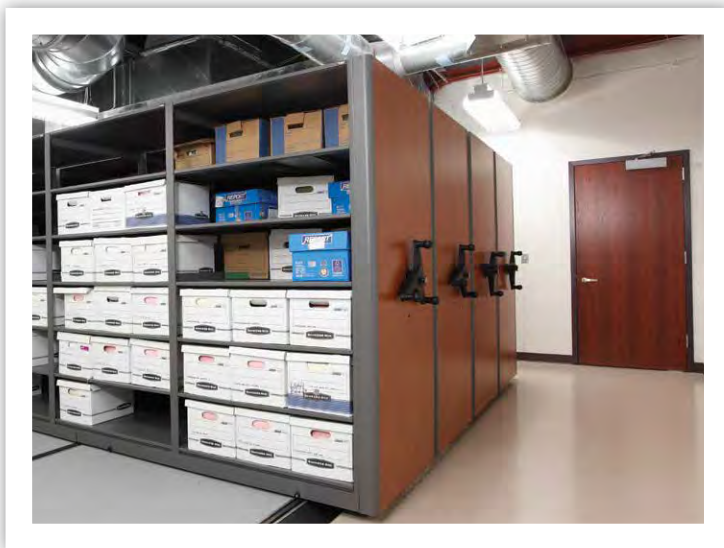


Large-capacity jobs are no problem for the heavy duty design of MobileTrak5®.

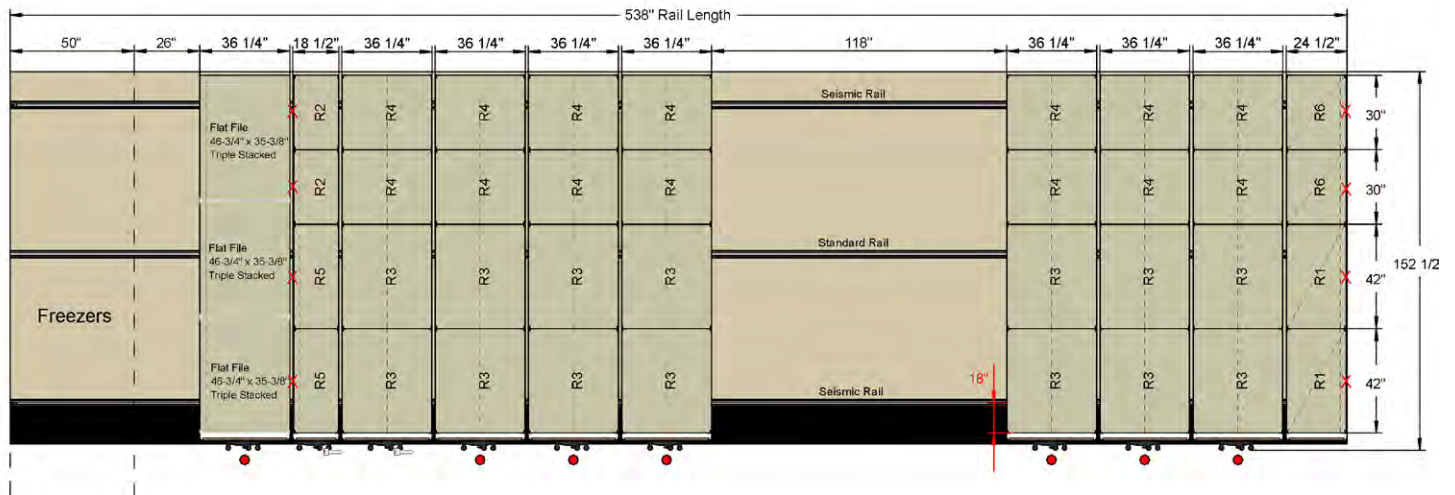
We can design what you envision.

There's a certain amount of anxiety that can be involved in choosing a brand new storage system in your facility. Concerns over space allotment, height restrictions, and aesthetic appeal come to mind.

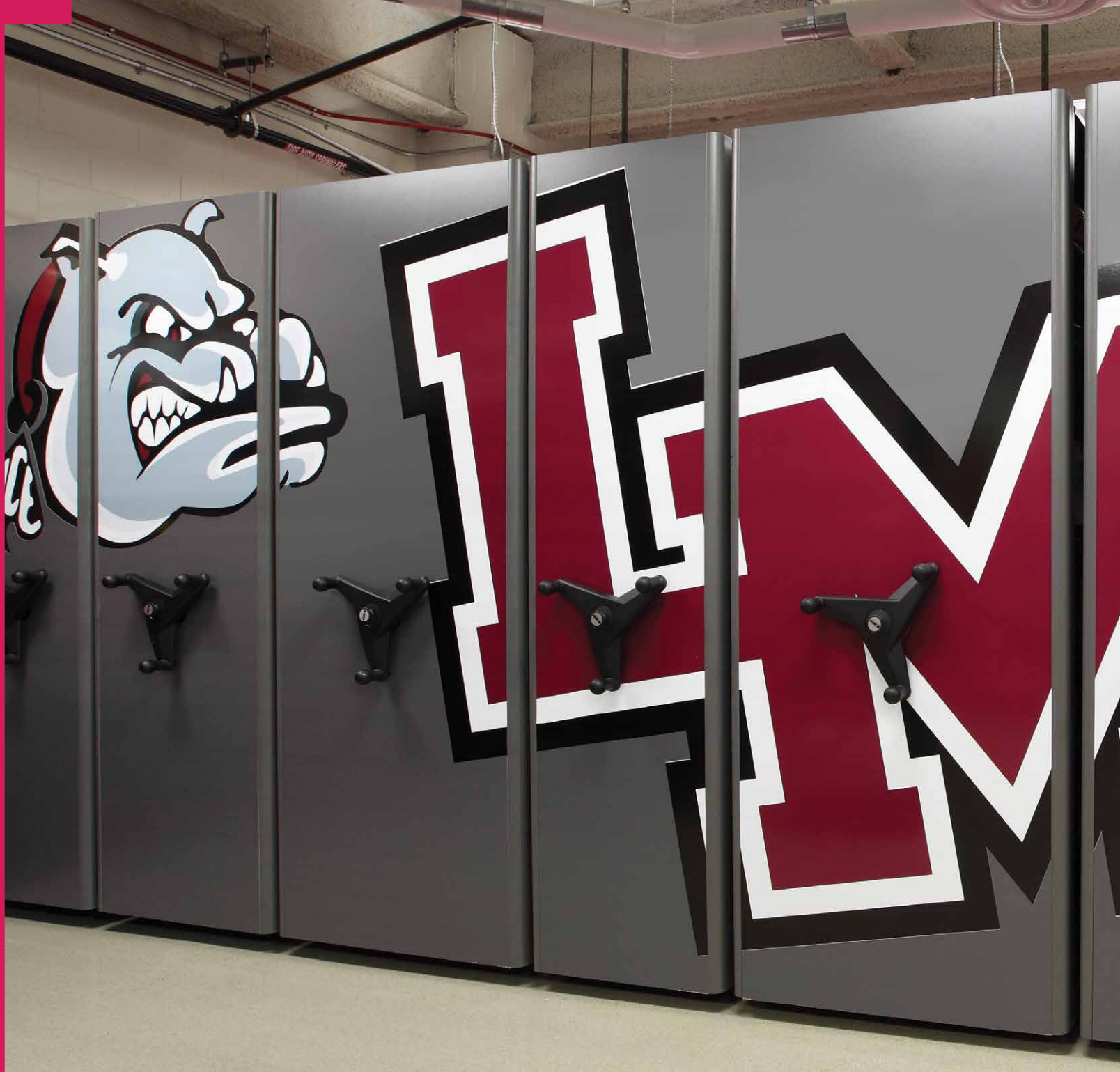
We'd like to put your minds at ease. To ensure a perfect look, feel, and fit for your new system, we use our very own design layout software. With it, we can show you exactly what the system is going to look like before it's installed, putting to rest fears of everything from clearance issues to aesthetic appeal.



Effective design enables optimal results. Careful consideration is reviewed prior to finalizing your system design.



Even this two-level, custom-height project for one of our National Parks was fully designed with state-of-the-art software before the system was produced.



Fully customizable.

Whether your space requires a custom color, special flooring, custom graphics, or you're storing something delicate or unique, we want your project. California Space Management has the right system for your individual storage needs.



Go team!

This MobileTrak® system stores athletic equipment and evokes school spirit with custom end panels.



Attention to detail.

We put a lot of thought into the design of our MobileTrak® systems because we know how important it is to meet the demanding expectations of storage requirements.

That's why every MobileTrak® system comes equipped with an array of features and options to optimize usage and expand storage potential.

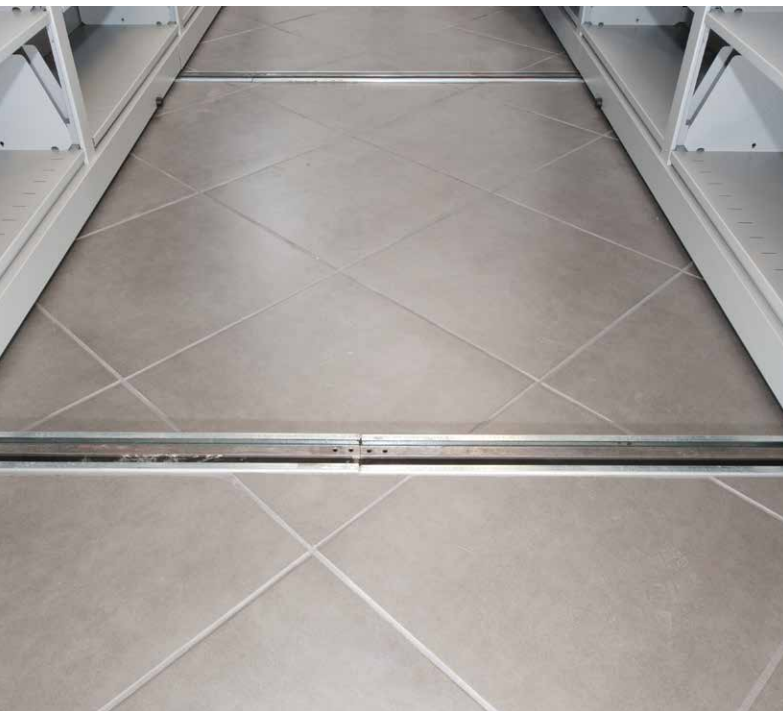


Aisle locks are available to provide safety and security for the system, locking the aisles open that are in use, or locking all aisles closed for security.

All MobileTrak® installations are available as grouted, recessed, seismic, or non-grouted systems.

Our experts can explain the benefits of each type of system in regard to your specific storage needs.

Choose manual or mechanical style systems for MobileTrak3® and 5®, or opt for an electrical system with MobileTrak e5®.



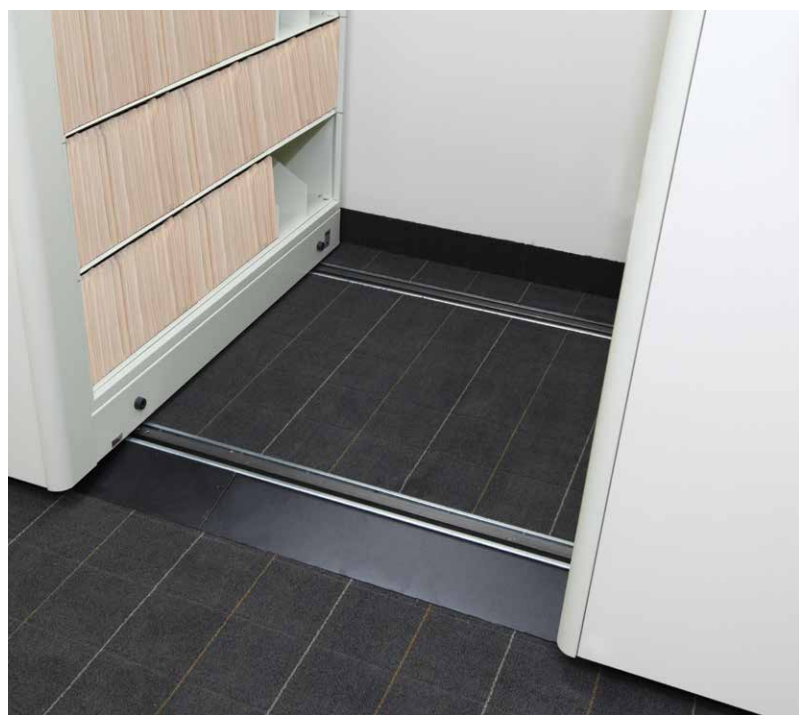
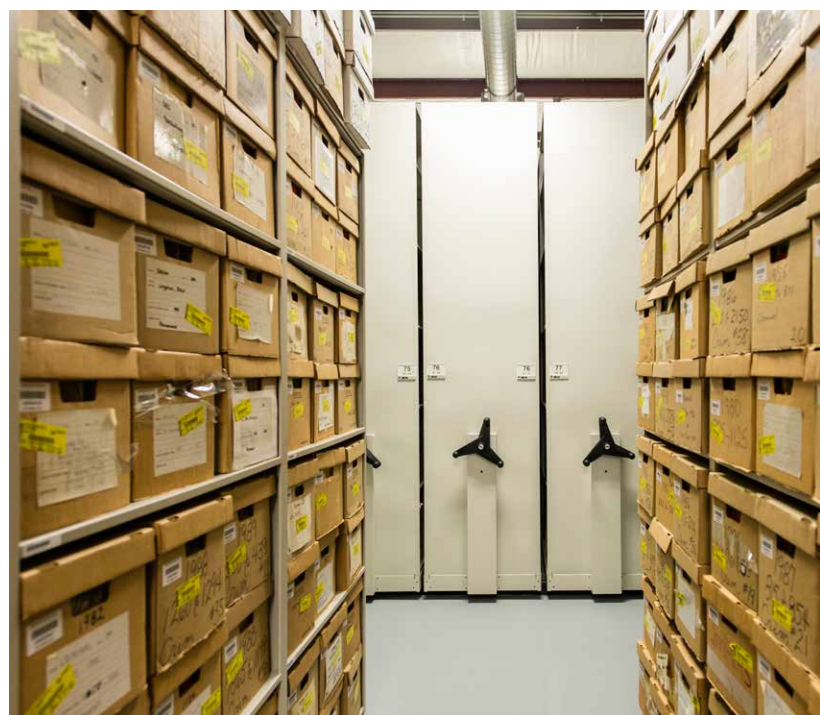


You can equip your MobileTrak® system with any of FS's shelving lines and virtually any other shelving system.

MobileTrak® gives you the capability to expand your storage capacity in order to meet current and future storage requirements.

With a large selection of standard paint colors and laminates, you can outfit your system to suit your needs. We even do custom colors.

offers a wide array of decking materials: polyvinyl, plywood, fire-retardant or environmentally friendly options. You can also create a seamless look by continuing your existing flooring onto the system. Steel, plywood, ADA and standard ramp options are available.



CUSTOMIZABLE, VERSATILE, DURABLE AND GUARANTEED

For more than 30 years, Filingsupplies.com has been delivering winning storage solutions to organizations across all industries helping them to save space, improve safety and enhance operational efficiencies.

Our dedicated team is committed to providing you with the best products, services and solutions available today, and we look forward to learning more about how we can help you.



11956 Bernardo Plaza Dr. Suite 524 | San Diego, CA 92128

<https://filingsupplies.com> | (800) 873-1707

services@filingsupplies.com